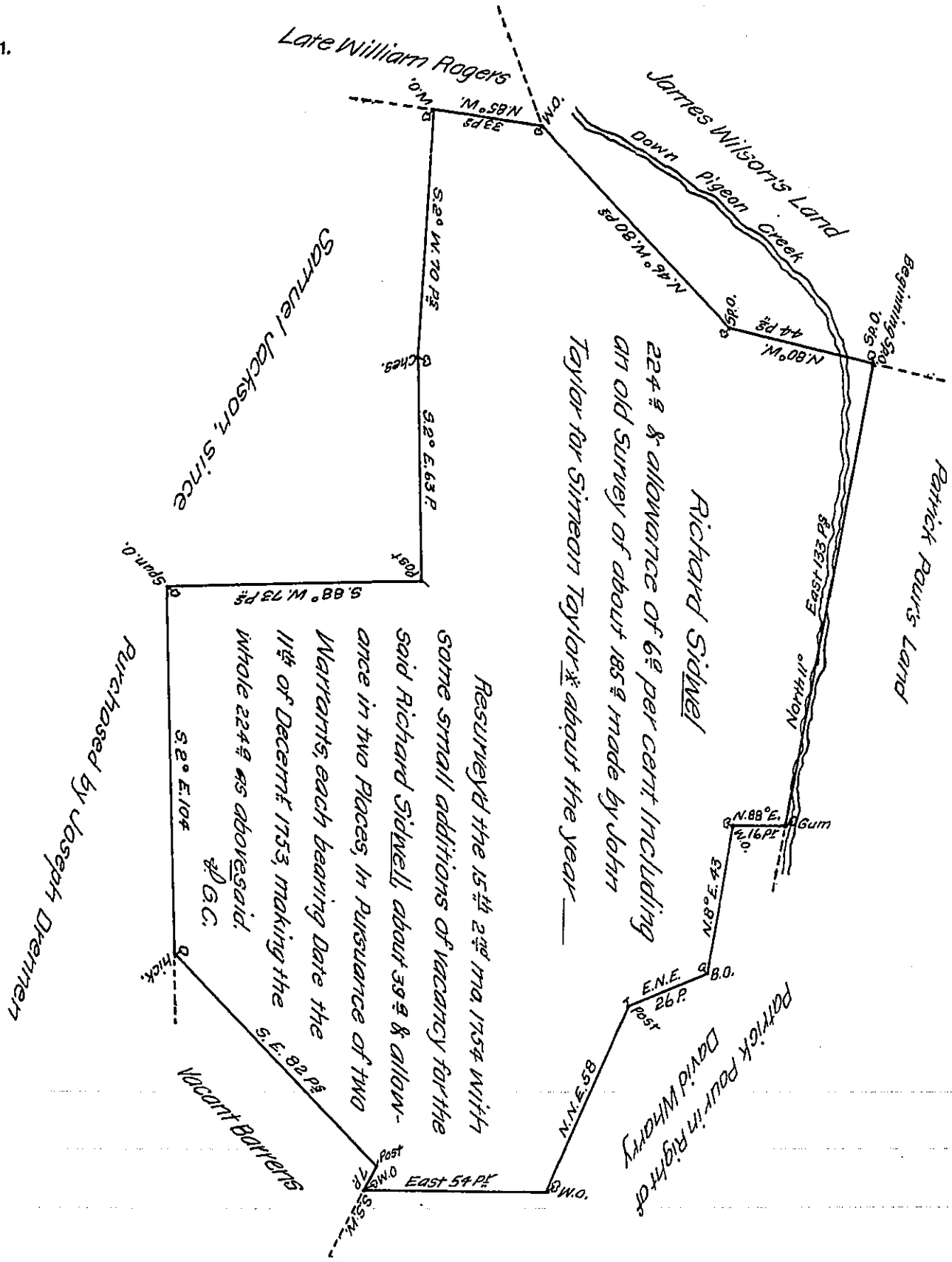


FORM NO 1.



The Tract of Land described by this Draught lays on Pigeon Creek (the Main Branch of Little Elk) in East Nottingham Township Chester County. Certify'd By
 Geo. Churchman, D.S.

Warr^{ts} to Simeon Taylor Dated 12th April 1734.

IN TESTIMONY that the above is a copy of the original remaining on file in the Department of Internal Affairs of Pennsylvania, made conformably to an Act of Assembly approved the 16th day of February, 1833, I have hereunto set my Hand and caused the Seal of said Department to be affixed at Harrisburg, this thirtieth day of November, 1907.

Henry How
 Secretary of Internal Affairs.